





Adam Hayes - North Finchley Office - Sales 365 Ballards Lane, North Finchley, London, N12 8LL

Tel: 020 8445 4008 Email: info@adam-hayes.co.uk Web: www.adam-hayes.co.uk

Holden Road, Woodside Park, N12

OIEO £450,000

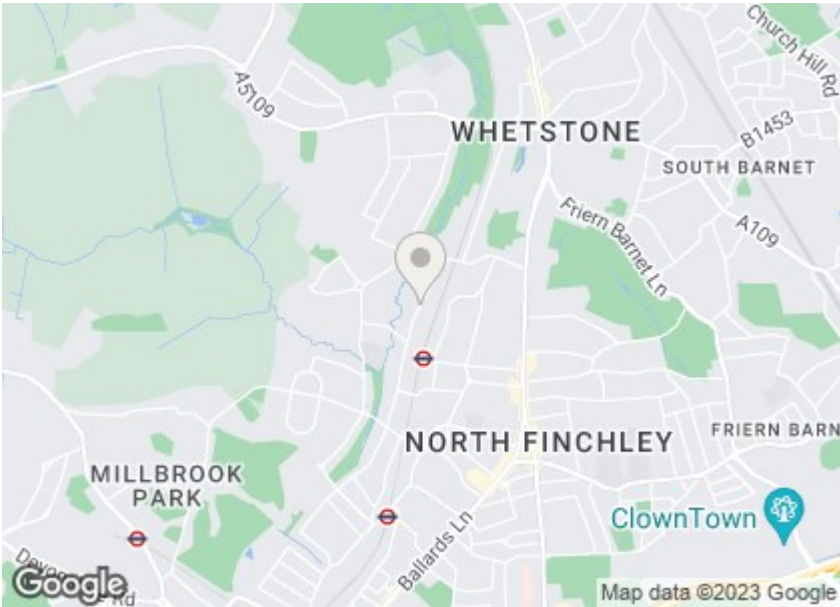
2 Bedrooms 1 Bathrooms 1 Receptions

Key Features

- Two Bedrooms
- Second Floor
- Modern Kitchen
- Communal Garden
- Lift Serviced Block
- Close to Station
- Council Tax Band: D
- Service Charge: £1,900
- Ground Rent: £250
- Leasehold (116 years)

Other Information

Tenure: Leasehold
Length of Lease: 116 years
Ground Rent: £200.00 P/A
Service Charge: £1,900.00 P/A
Council Tax Band: D

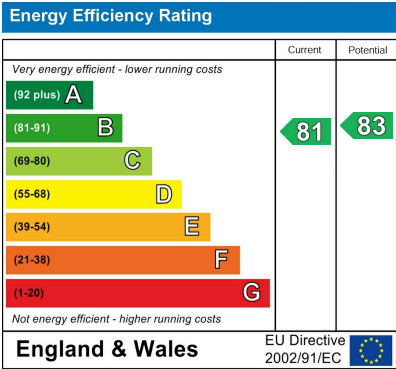


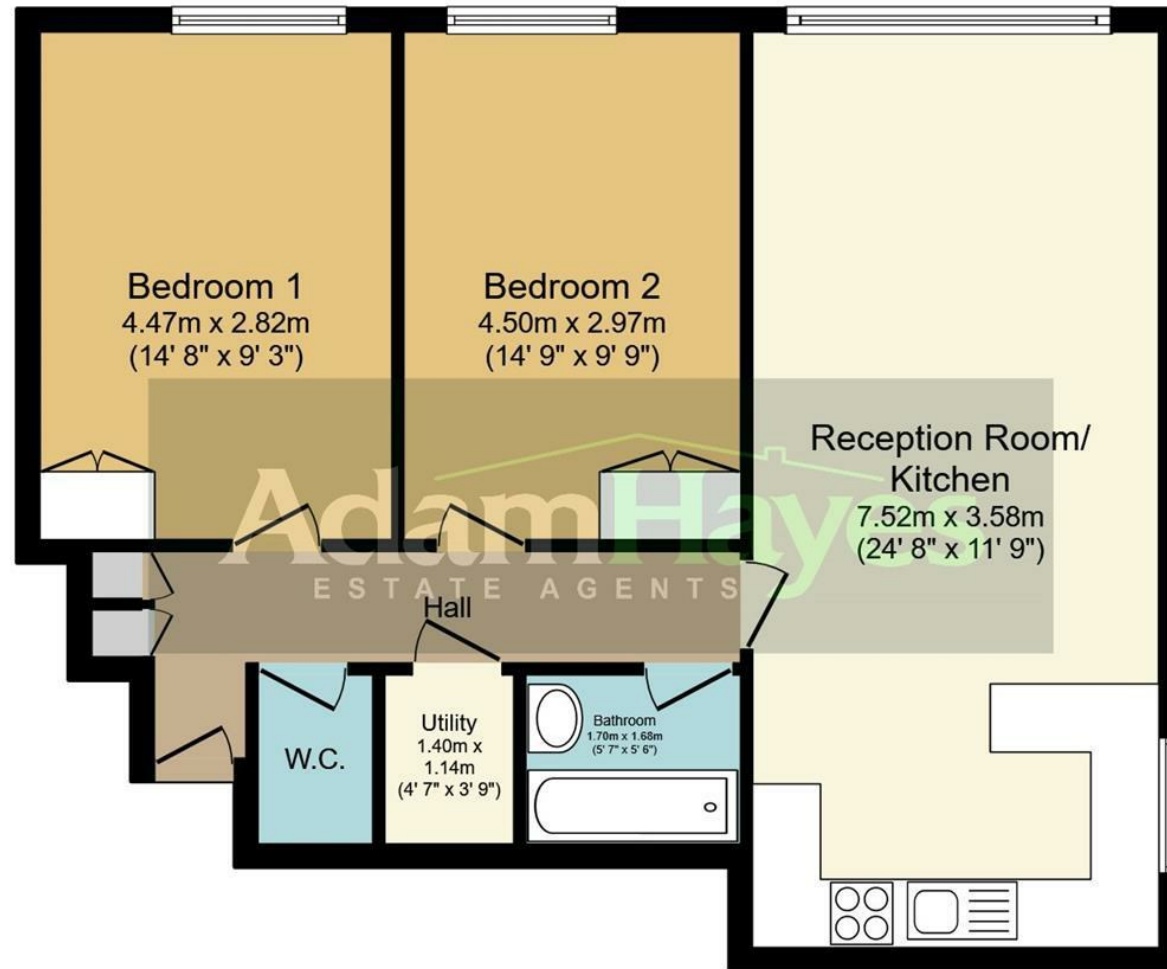
Nearest Stations

Woodside park Station	0.2 miles
West Finchley Station	0.7 miles
Whetstone & Totteridge Station	0.8 miles

Property Description

Situated within minutes walk of Woodside Park Tube Station on the second floor of this popular lift serviced block is this stylish two double bedroom apartment. This property is offered chain free and benefits from an approximately 27ft living room with a modern open plan kitchen and breakfast bar, a separate WC, wooden flooring, a video entryphone system and use of a landscaped communal garden. To really appreciate the size, condition and location an internal viewing is highly recommended via vendors sole agents Adam Hayes Estate Agents.





Floor Plan

Total floor area 70.9 sq.m. (763 sq.ft.) approx

This plan is for illustration purposes only and may not be representative of the property. Plan not to scale.

These particulars, whilst believed to be accurate, are set out as a general outline only for guidance and do not constitute any part of an offer or contract. Intending purchasers or prospective tenants should not rely on them as statements or representation of fact, but must satisfy themselves by inspection or otherwise as to their accuracy. We have not carried out a detailed survey, not tested the services, appliances and specific fittings. Room sizes should not be relied upon for carpets and furnishings. The measurements given are approximate. No person in this firm's employment has the authority to make or give any representation or warranty in respect of the property.